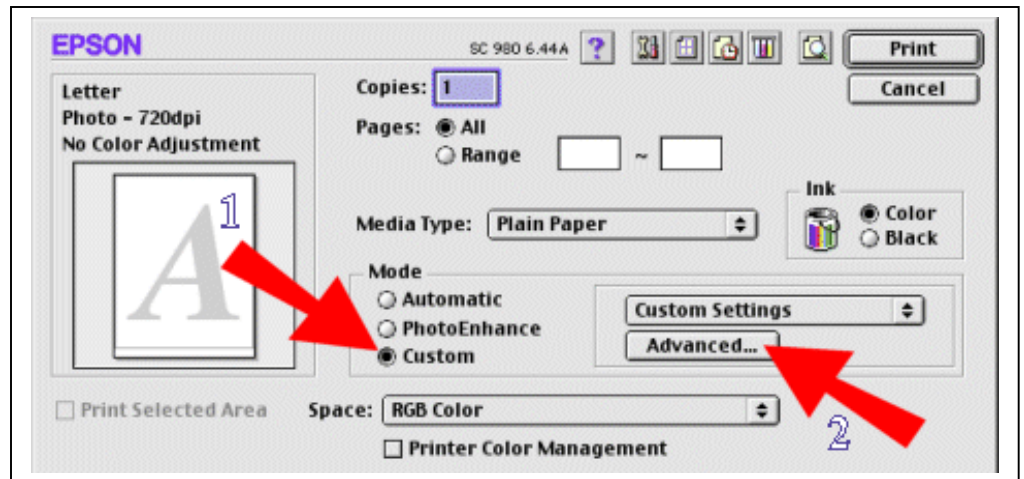


Configuring the Epson Stylus Print Driver and Photoshop 5 For ArTainium ICC Profiles on the Mac

When you have your image ready to print and clicked on 'file-print'

1. Click on 'custom'
2. Click on 'Advanced'

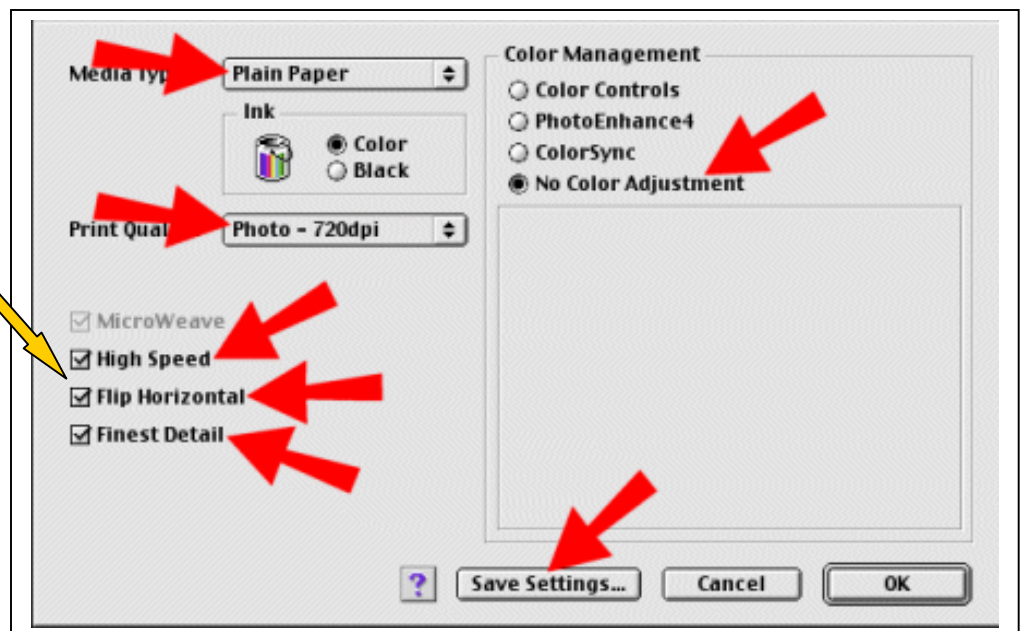


Set all parameters as shown here.

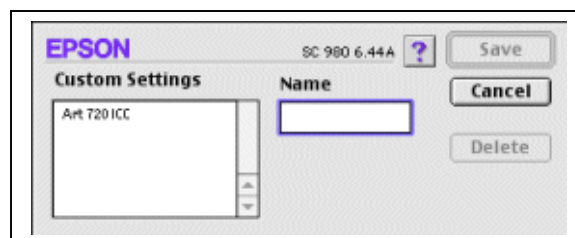
These change slightly from printer to printer but ALL boxes should be checked.

The most important parameter is the 'No Color Adjustment'

When everything is set up click on 'Save Settings'



Put the cursor in the 'Name' box and type in your preferred custom setup name. I have typed in Art720ICC for example. Then click 'save'.



You will be taken back to this dialogue box and :-

1. Click on this bar and you will get a drop down box showing all the profiles you have available on your hard drive. Place the relevant Artainium profile in this area.
2. Make sure that this box is **UN-Checked**
3. Make sure that your printer driver setup is shown here (if it is not you can click on the bar and choose the setup that you created earlier).
4. Click '**Print**'.

